

PENKRIDGE BANK ROAD PRINCIPAL: RACHAEL SANDHAM
RUGELEY
STAFFORDSHIRE T +44 (0)1889 802440
WS15 2UE E enquiries@hartschool.org.uk
www.hartschool.org.uk



**THE HART
SCHOOL**
*Creative
Education
Trust*

NLE / RSA/ SHN

8 July 2025

Dear Parents and Carers,

Uniform and Appearance Expectations for 2025–2026

We would like to thank our parents and carers for their support over the 2024-25 academic year. As we approach the new academic year, we wanted to take the opportunity to remind all stakeholders about how proud we are of our high standards, and a key part of this is the pride we take in our school uniform. Wearing the correct uniform helps build a sense of belonging and demonstrates respect for our school community. I am writing to share with you the full expectations regarding school uniform, jewellery, hairstyles, and appearance, as outlined in our Behaviour Policy.

Uniform Expectations

All students are required to wear the following:

- The Hart School blazer with logo
- A plain white shirt (short or long sleeve) with a collar and top button (no polo shirts)
- School tie
- Optional: School jumper worn under the blazer
- Trousers - Trousers must be straight leg, full length plain black trousers to the ankle and formal style fit.
- Plain, black leather or leather-look polishable shoes (no trainers, canvas, crocs, or branded footwear)
- A dark, smart, waterproof coat for outdoor wear (no hoodies, sweatshirts, leather or denim jackets)

PE Kit Expectations

- Black PE shirt with school logo
- Black shorts or skort (with logo), black tracksuit bottoms or leggings (optional in cold weather)
- Black socks, training shoes (non-marking), football boots, shin pads, and gum shield



Jewellery and Accessories

Permitted items include:

- One flat, plain ring
- One pair of small, plain stud earrings (in the lower earlobe only)
- A watch

No facial piercings are allowed, including nose studs or clear retainers. Students may not attend school with a plaster covering a piercing.

Make-Up and Nails

Make-up should be minimal. Students will be required to remove excessive make-up, including but not limited to:

- Nail varnish or false nails
- False eyelashes
- Heavy eye make-up or lipstick
- Fake tan

Hair Styles

Extreme hairstyles are not permitted. The following are not allowed:

- Unnatural hair colours (e.g. pink, purple, bright red)
- Patterns, logos, or lines shaved into the hair or eyebrows
- Close-shaved hair or undercuts
- Two-tone dyed hair

Hairstyles should be neat and appropriate for school. Decorative attachments are not permitted unless for religious or cultural reasons.

Additional Information

- Cardigans, hoodies, and sweatshirts may not be worn under or over the blazer.
- Winter hats, scarves, and gloves may be worn outside only. Baseball caps are not allowed.
- Students are **required to bring a school bag and essential equipment** daily.

Uniform checks take place at the school gate; students not in full uniform will be issued loan items in return for a personal item (e.g. mobile phone, earphones). Items must be returned at the end of the day.

This respectful exchange system, where students not in full uniform are offered loan items in return for a personal belonging, is designed to foster a culture of mutual respect and shared responsibility. It reinforces our belief that every student deserves to start their day feeling prepared and included, without unnecessary barriers to participation.

By avoiding punitive measures and instead offering a practical solution, we demonstrate our commitment to empathy and equity. The exchange process also encourages accountability, as students are expected to care for the items loaned and return them at the end of the day. This approach supports our inclusive ethos while maintaining high standards of dress and readiness for learning.



We understand that financial difficulties may impact access to uniform or equipment. In this instance, please contact your child's Head of Year or Student Support Officer so we can offer appropriate support.

We thank you for your continued partnership in upholding these standards, which help ensure a positive and respectful learning environment for all. We have placed images onto the overleaf this letter should visual aids support you ahead of purchasing any new uniform for the upcoming academic year.

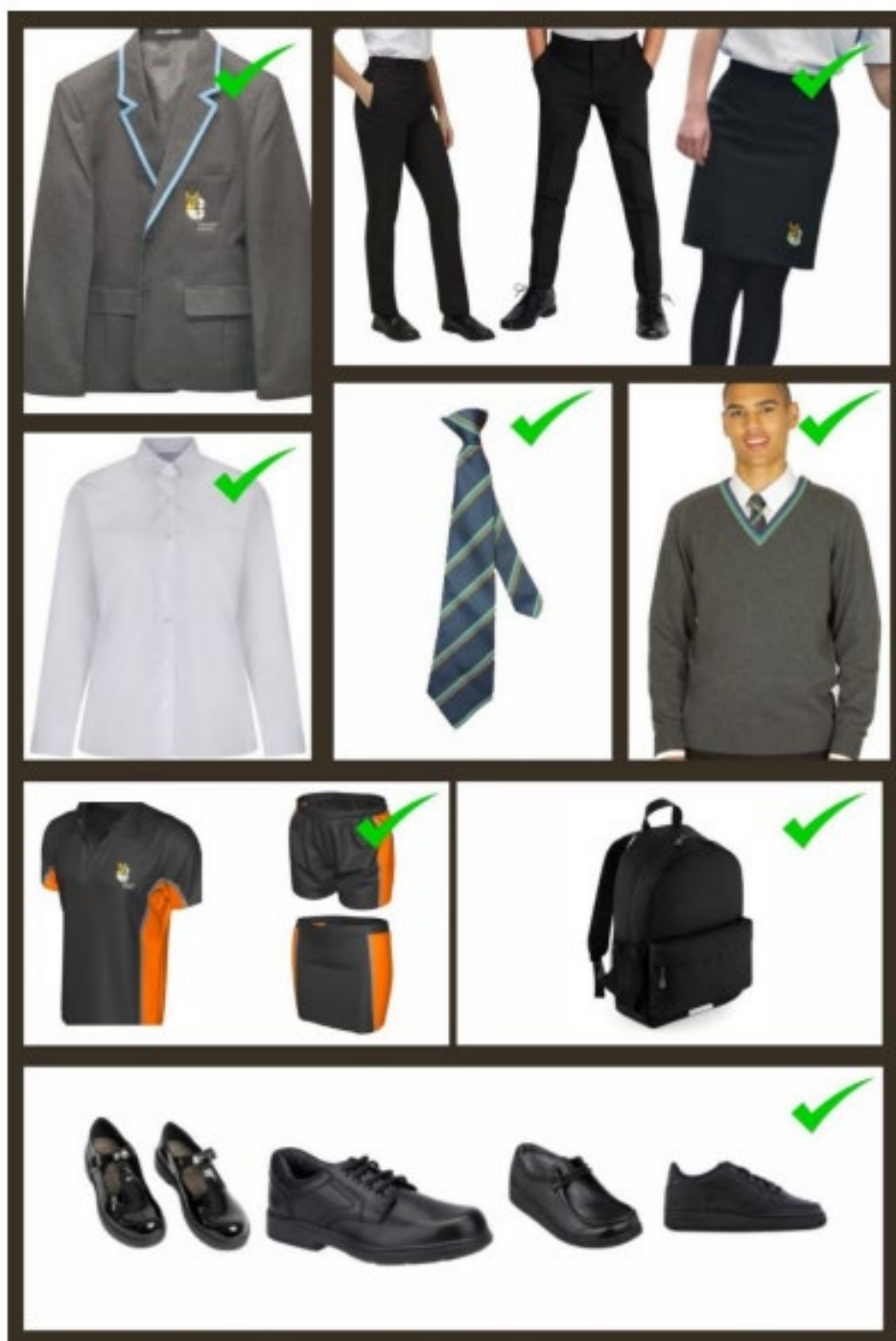
Yours sincerely,

Nathan Lewis

Vice Principal



Visual examples of acceptable school uniform:





Images of adaptations to uniform that are not permitted:





Further Visuals of Non-Complaint Uniform

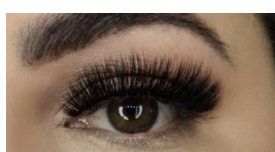
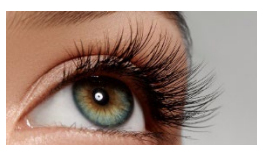
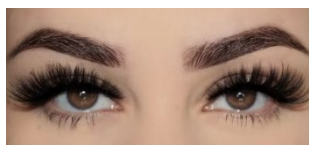
Hoodies and Sweatshirts



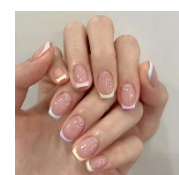
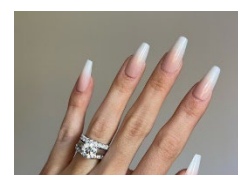
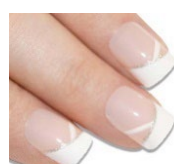
Skinny Trousers



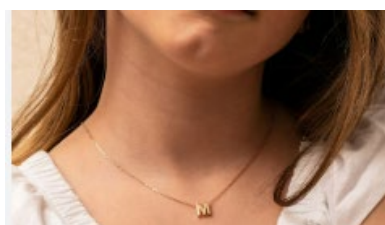
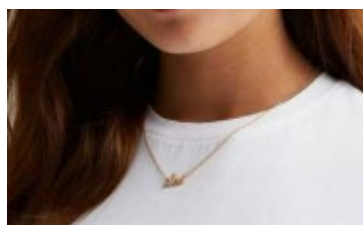
False Eyelashes



Fake Nails



Necklace(s)

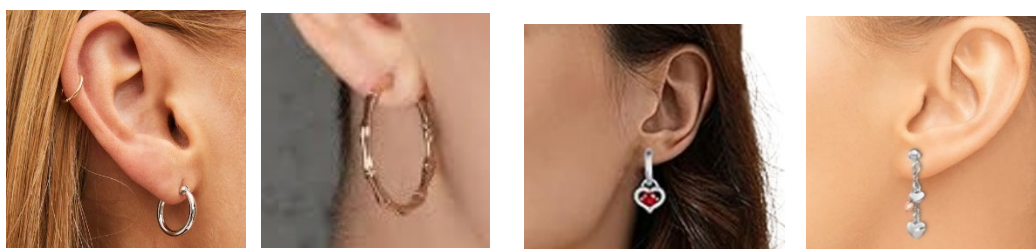




Nose Stud(s)



Earrings



Two-Tone Hair



Non-Compliant PE Kit

Cycling Shorts / 'Pro' Gear

