

Year 6 Transition

Everything you need to know about joining The Hart School



WE CAN • WE WILL • WE DO

WELCOME

TO THE HART SCHOOL

It is with great pleasure that we welcome your child as they begin their journey with us at The Hart School. We are delighted that you have entrusted us with their continued education, and we are committed to ensuring they have a successful, happy, and rewarding experience here.

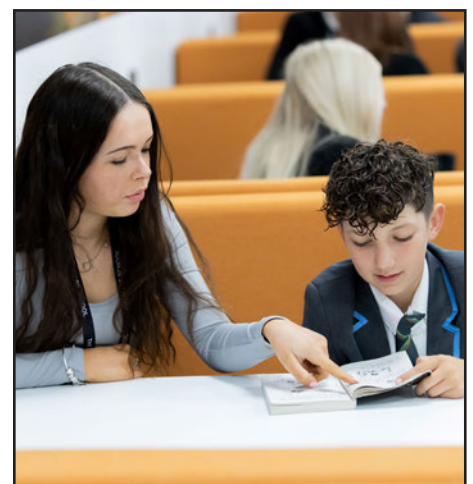
Mrs Hibberd and Mrs Cleary, our Transition Team, have been working hard to plan a smooth and successful transition for our new students moving from Year 6 into Year 7.

We are dedicated to supporting every child so that they feel confident and ready for the start of secondary school. Transition is an important part of this journey, and we aim to make it as positive and reassuring as possible for both students and their families.

To support you, we have created a dedicated transition area on our website. Here, you will find key information, guidance, and resources to help answer any questions you may have and to prepare your child for the exciting step ahead. This area will be regularly updated throughout the summer term.

If you have any further questions or concerns, please do not hesitate to get in touch. We look forward to welcoming your child to The Hart School.

www.hartschool.org.uk



ABOUT CREATIVE EDUCATION TRUST

Creative Education Trust inspires and enables young people to build successful lives on foundations of learning, resilience and employability.

The founders of Creative Education Trust are committed to providing an education to the children and young people in its schools. They aim to enhance their opportunities in life by equipping them to be employable and to be active and responsible citizens in the rapidly changing 21st-century world.

They are also committed to developing cultural capital for Creative Education Trust students by means of a curriculum that links different areas of knowledge and gives access to the arts, science and engineering, civic enterprise, public speaking, travel and sport.



Knowledge Connected



Creative Education Trust has sought to define creativity well beyond the learning of practical arts subjects in schools. It defines creativity as the ability to find connections between the things we know and to turn these connections into new ideas and actions.

The academic arts and the sciences, practical subjects and life skills all require this connectivity and research indicates that employers value highly individuals who can demonstrate this ability.

MEET OUR LEADERSHIP TEAM

The Senior Leadership Team (SLT) are a dedicated group of experienced leaders that work together to continue to drive whole school improvement.



Miss R Sandham
Principal



Mrs Louisa Burnett
Vice Principal
Teaching & Learning



Mrs J Mahon
Vice Principal
Curriculum & Standards



Mr N Lewis
Vice Principal
Behaviour & Attitudes



Mr B Brennan
Assistant Principal
Teaching & Learning



Mrs A Cleary
Assistant Principal
Teaching & Learning



Mr C Milner
Assistant Principal
Culture & Ethos



Miss S Davis
Assistant Principal
Achievement & Curriculum



Miss S Dosanjh
Assistant Principal
Achievement & Curriculum



Mrs H Goodall
Assistant Principal
Safeguarding

OUR PRINCIPAL

Miss R Sandham



I am excited to welcome your child to The Hart School and to them taking the next steps in their education and development. I genuinely hope that both you and your child are equally excited.

Our school is an innovative educational establishment and, as such, will provide your child with the learning experience to ensure that they fulfil their potential.

We organise our school to be child-centred and both friendly and supportive. We are focused upon each individual student fulfilling their potential by making exceptional progress.

Ultimately we guide our students to be the best they can be and we are honoured to be supporting them on their journey towards adulthood.

Starting a new school is an exciting time and Year 6 children tend to experience a range of different emotions as the end of the academic year approaches.

We know that, as well as the excitement you will be feeling, you may also be a little nervous. Please be reassured that we have a dedicated team of people here at The Hart School who will help you as you make the transition, with a range of activities and events planned to help you settle in as quickly as possible. I look forward to meeting you and your child in person very soon.

“

Our purpose is to provide a high quality, inclusive education, which will support, challenge and inspire children, enabling them to succeed, mature and fulfil their potential ”





OUR VALUES

The Hart School strives to graduate responsible and creative global citizens in a respectful and diverse environment where relevant learning fosters excellence in personal achievement, compassion, curiosity, and critical thinking.

For a school to be successful, students, staff and parents must be committed to a clearly defined set of core values. These values provide direction for the school and the establishment of a school climate in which each student may have the opportunity to grow and reach an optimum level of academic, artistic, athletic, and personal success.

The following core values serve as our foundation at The Hart School. We will strive to establish an atmosphere in which:

Happy

Learners are confident, literate and well-rounded citizens; they understand the world's communities and are ready to discover their place in it through enquiry and self-reflection.

Ambitious

Learners are ambitious to achieve; they gain deep and powerful knowledge in preparation for life; combining academic rigour, curiosity and creative flair.

Resilient

Learners are fully equipped and ready for this world. They are not fazed when faced with challenges and are determined to be successful.

Tolerant

Learners respect the individuality of each person and value diversity. They promote a culture which allows all to flourish through mutual respect.

FIRST DAY AT SCHOOL

Getting lost is part of what being new to a school is all about. You don't need to worry as our teachers understand that the school is new to the students and know that sometimes they may not be able to find where they are going in the first few weeks.

One advantage of getting lost is it means students start to make new friends as everyone is getting lost and finding their classroom together!

RESEARCH OUR SCHOOL

Starting high school can be scary, and it's perfectly normal to feel nervous. Stay positive, and remember that your new classmates feel nervous, too.

Before your first day, try to learn about your new school by checking out its website and social media pages.

Visit www.hartschool.org.uk



MEET OUR FACULTY DIRECTORS

One of the main differences between primary and secondary schools is the amount of teachers that students meet during the school day.

Students will move from lesson to lesson and be taught by up to five teachers every day.



Mr Riddle
Mathematics

adam.riddle@hartschool.org.uk



Mr Windows
Science

alex.windows@hartschool.org.uk



Mrs Brown
English

kirsty.brown@hartschool.org.uk



Mr Webber
Design

robson.webber@hartschool.org.uk



Mr Fitzgerald
Humanities & MFL

peter.fitzgerald@hartschool.org.uk



Miss Cowley
Performing Arts

charlotte.cowley@hartschool.org.uk



Mrs Dix
PE & Health

michelle.dix@hartschool.org.uk



Mrs Swanston
Computing

nardia.swanston@hartschool.org.uk

YEAR 7 PASTORAL CARE

Year 7 Pastoral Care at The Hart School

At The Hart School, we are committed to providing outstanding pastoral care for all our students, with a particular focus on ensuring a smooth and supportive transition into secondary school for our Year 7 cohort. Each Year 7 student benefits from the dedicated support of a Teaching Head of Year and a non-teaching Student Support Officer, who work closely together to ensure every child feels safe, valued, and well-supported.

Our pastoral team is visible and accessible throughout the school day, with both the Head of Year and Student Support Officer on duty before school, during break and lunch times, and after school. This consistent presence enables them to build strong, trusting relationships with students, respond swiftly to any concerns, and promote a positive, inclusive school environment. Through this high level of care and daily interaction, we aim to help every Year 7 student thrive both personally and academically.



ROLE OF THE Y7 TUTORS

Our tutors are an invaluable part of the pastoral system.

The Form Tutor plays a central role in your child's daily school life and is the first point of contact for both students and parents. They see students each day, take an active interest in their wellbeing, and support them with organisation, routines, and settling into school life.

Form Tutors also monitor academic progress and help ensure that every child feels safe, supported, and ready to learn. If you have any questions or concerns, we encourage you to contact your child's Form Tutor in the first instance, as they are best placed to provide day-to-day support and guidance.

If further support is needed, the Head of Year works closely with Form Tutors to oversee the progress and wellbeing of all students within the year group. They provide additional guidance and support where required.

Alongside this, our Student Support Officer is available to help with pastoral care, attendance, and any wider concerns, working in partnership with families to ensure every child is fully supported throughout their time at school.



TEACHING AND LEARNING

Academic excellence,
stimulating curiosity,
unlocking potential...



Our curriculum engages, enthuses and sparks curiosity. Our GCSE and vocational qualifications prepare students for competitive work as they develop academically and stimulate personal confidence and resilience. We ensure that our broad and balanced curriculum inspires and engages our students but also offers challenge, support and development for every individual.

Providing a stimulating academic learning environment is critical to the development of our progressive curriculum and success. Our facilities offer bespoke learning environments: a well equipped Sports Dome and Dance Studio as well as art rooms and technology workshops.

We strive for the highest quality of teaching and we are proud of our students' achievements, both academically and socially. Teachers have high expectations of both themselves and their students; we treat

students with respect and they respond positively to this approach, resulting in very constructive working relationships between students and staff.

Our teachers and support staff have high quality training to keep them at the forefront of educational knowledge and practice. Using their specialist subject knowledge and experience in the classroom, staff encourage students to question and develop independent thinking and learning skills.

A photograph of two students in school uniforms sitting at a desk. The student on the left is a young woman with long brown hair in a ponytail, wearing a grey blazer, white shirt, and a striped tie. She is looking down at a piece of paper. The student on the right is a young man with short dark hair, also wearing a grey blazer, white shirt, and a striped tie. He is looking down at a book or paper. In the background, another student is visible, slightly out of focus. The desk has several papers, a red pencil case, and some green highlighters.

'Good' Ofsted judgement June 2023

“

**The Hart School
is an inclusive,
welcoming and
friendly school..”**

INDUCTION DAY

The transition from primary to secondary school is an important one for you and for your child; we will work hard to make sure that this is a positive experience for all, even under the current circumstances. We are confident that we can transition your child safely and will work with parents and primary schools to ensure the transition is smooth and successful for every child.

When families have been allocated a place, we contact all families to make an initial introduction. During the months of April, May and June, members of the pastoral and support teams make contact with the primary schools to discuss students and share information about the children coming to us in September. This ensures that any relevant information is passed on and helps us to get to know our new students and plan ahead.

During June / July, we will have two transition days where all Year 6 students visit The Hart School for taster sessions and to meet their new tutors and teachers.

Website - Year 6 Transition Section

In the meantime, please access our dedicated Year 6 Transition section on our school website. Here you will find useful resources to help prepare your child for transition into Year 7 at The Hart School.



SUPPORTING YOUR CHILD

The Student Support Team ensures that students who may require additional support, whether due to physical needs, learning differences, or social, emotional and mental health needs, are fully supported to access an inclusive and ambitious curriculum.

The Student Support Team provides both individual and small group support for pupils, as well as helping students to access their learning effectively in the classroom. They focus on developing key skills in English and maths, alongside social skills, communication, and mentoring to support students' social and emotional wellbeing. This support is delivered by a team of trained teaching and non-teaching staff.

In addition, the Student Support Team offers support during breaktimes and runs after-school clubs focused on homework and organisation skills.

The SENDCo at The Hart School is Mrs Taylor. She works closely with the Head of Year and Student Support Officer to ensure that students receive the support they need.

Mrs Taylor also liaises with SENDCos and teaching staff from our partner primary schools to ensure a smooth and successful transition into secondary school.

If you would like to arrange a telephone meeting to discuss your child's learning needs, please contact Mrs Taylor via email.

louise.taylor2@hartschool.org.uk



KEY INFO

Timings of the School Day

Time	Period (1 to 5)
08:30am - 08:40am	Students arrive/warning bell
08:40am - 09:05am	Registration/tutor time/assembly
09:05am - 10:05am	Lesson 1
10:10am - 11:10am	Lesson 2
11:10am - 11:35am	BREAK 1
11:35am - 12:35pm	Lesson 3
12:40pm - 13:40pm	Lesson 4
13:40pm - 14:10pm	BREAK 2
14:10pm - 15:10pm	Lesson 5

School Holidays 2026- 27

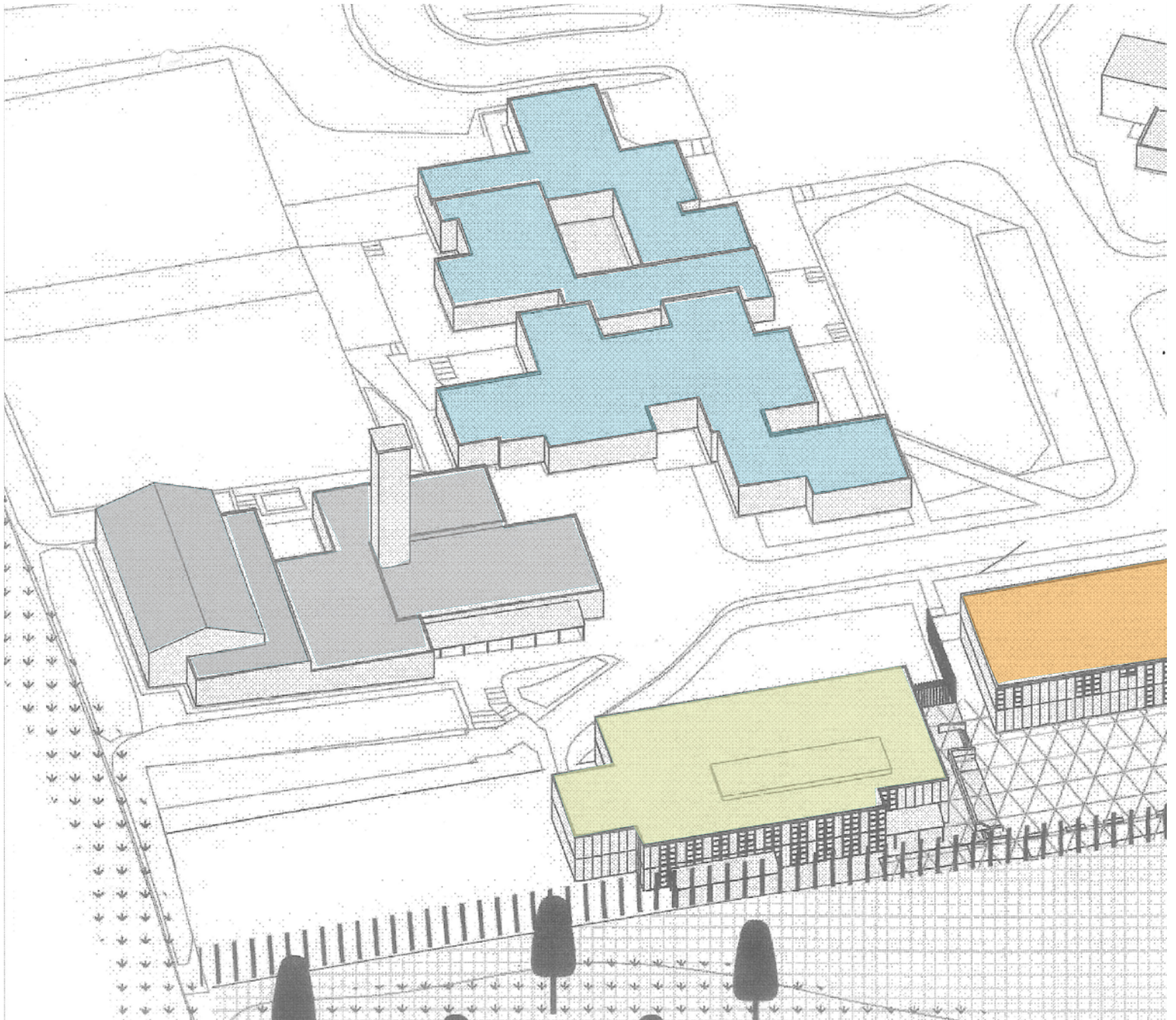
School Holidays	Starts	Ends
First Day of School	3 Sep 2026	
Autumn Half Term	26 Oct 2026	30 Oct 2026
Winter Holidays	21 Dec 2026	05 Jan 2027
Spring Half Term	15 Feb 2027	19 Feb 2027
Spring Holidays	29 Mar 2027	09 Apr 2027
Summer Half Term	31 May 2027	04 June 2027
Summer Holidays	21 Jul 2027	



FORMATION

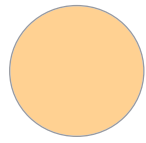


SCHOOL MAP

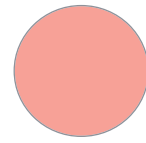




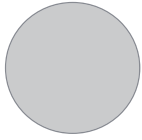
DESIGN FACULTY



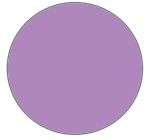
ENGLISH FACULTY



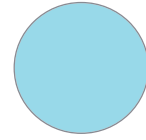
SCIENCE FACULTY



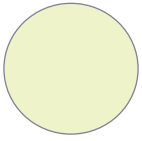
HEALTH & SPORT FACULTY



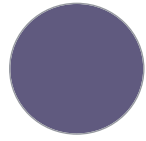
MATHS & COMPUTING FACULTY



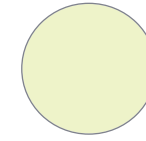
PERFORMING ARTS FACULTY



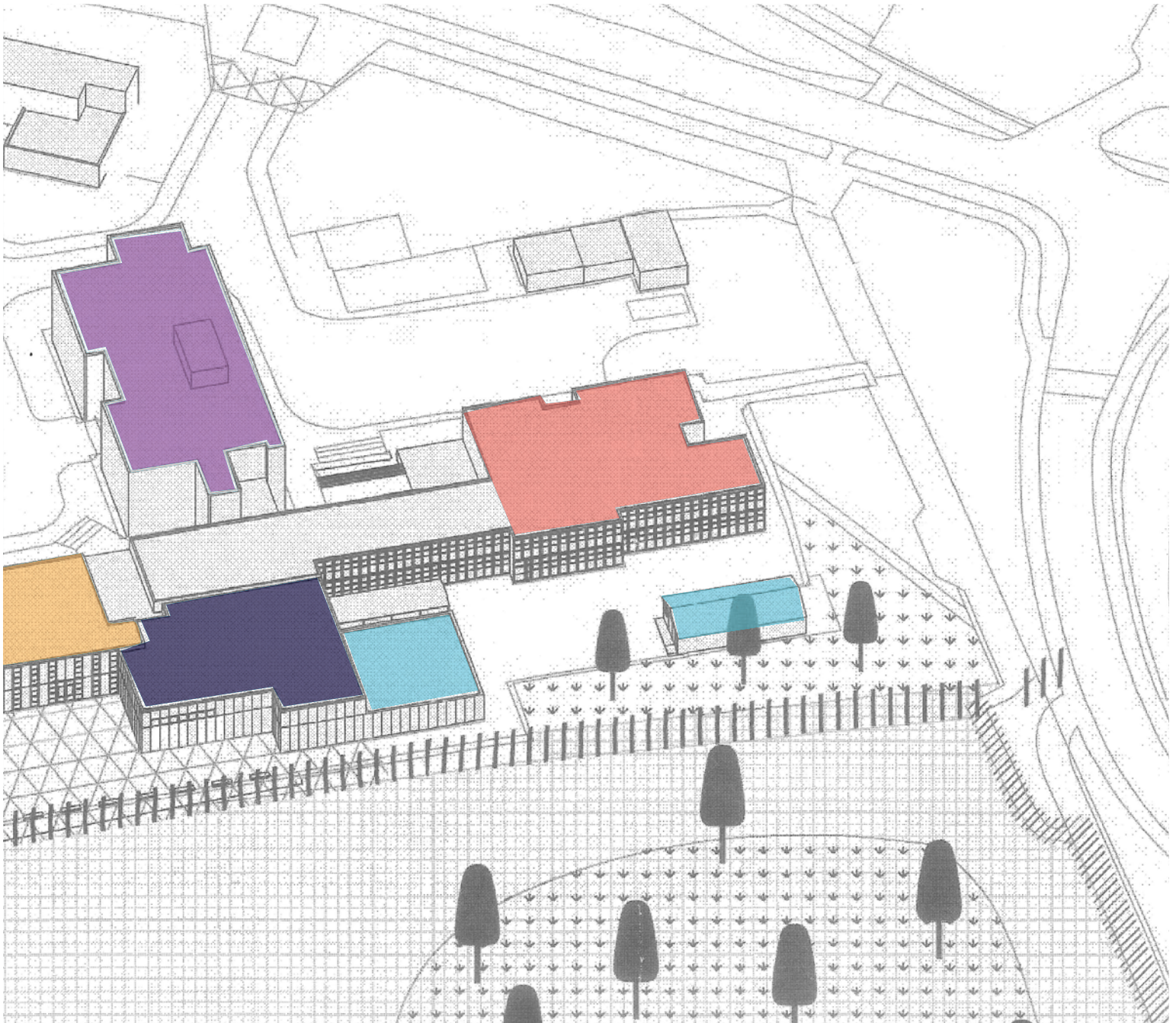
MFL & HUMANITIES FACULTY



SCHOOL HALL



RESTAURANT





BEHAVIOUR FOR LEARNING

High expectations, high aspiration, high achievement

Supporting your child and keeping you informed is critical to their success and happiness. From Year 6, our Transition and Induction Programme ensures that your child is confident about joining us in September. Once here, our dedicated and specialist Student Support Team works tirelessly to provide your child with support, care and empathy whilst reminding them when necessary of the high expectations we have at The Hart School in terms of their behaviour, attitude and standards.

A strong system of support exists for students at all times. Each student is a member of a tutor group. Each tutor monitors your child's progress and welfare. As well as your child's tutor, there is a whole network of staff providing the support your child may need, whether that is specialist intervention for learning needs, behaviour support, mentoring, safeguarding help, health or medical support or counselling. They will also be in regular contact with their Student Support Officer and their Head of Year who will work closely with teachers and tutors.

We consider parental and carer involvement to be of paramount importance. We keep in close touch with you at home through our home-school email, Arbor, newsletters, our website, and termly reports, which provide regular checks on progress. Equally, on return to school, parents and carers are welcome to make an appointment to school to discuss any concerns.

'Good' Ofsted judgement July 2023

**“ Pupils
behave very
well in lessons
and move
calmly around
the school
site. They
enjoy being
part of this,
harmonious
school.”**



CASHLESS CATERING



The Hart School is pleased to offer a catering facility with a wide range of nutritious hot and cold meals, including a vegetarian option, each day.



We encourage lunchtime to be a social occasion where the children enjoy down time with their friends. Snacks are also available to buy during break time.



The Hart School operates a cashless catering system. This is a system that incorporates the latest technology and eliminates the need to carry cash throughout the day.

The system will recognise the thumb or finger of your child at the pay points and at the tills.

No cash is accepted at the till points.



BENEFITS THE CASHLESS SYSTEM BRINGS TO SCHOOL

- Increased speed of service reducing queuing times.
- Automatic Free School Meal allocation with the student remaining anonymous.
- Specific food allergy ingredients can be barred automatically.
- Healthy eating is encouraged.
- Facility to pay online discourages the misuse of school dinner money through spending in shops outside of the school grounds.
- Alleviates many of the associated problems with the use of cash in schools i.e. loss, theft and bullying.
- Automatic alerts to stop students purchasing trigger items.
- Students learn about important lifestyle control by monitoring their own accounts.
- Overview of student accounts: ability to confirm money paid into the accounts and various other reports on all aspects of the system.



FREE SCHOOL MEALS

Is your child eligible for free school meals?

The Pupil Premium is grant funding allocated to children from low-income families (who are registered for free school meals or have been within the last 6 years) and children who have been looked after continuously for more than 6 months.

The entitlement criteria from 1 April 2018 is that you can currently claim free school meals for your child if you receive any of the following benefits:

- Income Support
- Income Based Job Seekers Allowance
- Income Related Employment and Support Allowance
- Eligible for Child Tax Credit but not Working Tax Credit and the household income (as used by HMRC to assess tax credits) is not more than £16,190. Please note: anyone eligible for Working Tax Credit or who has a partner and they receive it, regardless of income, will not qualify.
- The Guarantee element of State Pension Credit Support under Part VI of the Immigration and Asylum Act 1999
- In receipt of the four-week run on of Working Tax Credit (this is where someone becomes unemployed or reduces their hours and so is no longer entitled to Working Tax Credit but will continue to receive it for a further four weeks and is entitled to free meals during that time)
- Universal Credit (provided you have an annual net earned household income of no more than £7,400pa as assessed by earnings from up to three of your most recent assessment periods).
- Your net earned income is your household income after taxes and deductions and does not include income from Universal Credit or any other benefits you may receive.

HOW DO I APPLY?

If you meet the low income criteria, you need to apply online. It only takes a few minutes and you get an instant yes or no as to whether you are entitled to free school meals.

To apply on-line go to www.staffordshire.gov.uk/Education/Educational-awards-benefits/FreeSchoolMeals/Apply-online

The information you provide will be used to determine initial and ongoing entitlement to make an application for free school meals for the child(ren) named on the application form and any other siblings who join Staffordshire schools at a later date.

After completing an application you can print a copy of the confirmation page to give to the school for meals to start immediately.

If you are unable to print you can still make your application online, but will need to wait for Staffordshire County Council to advise the school before you can start to receive the free school meals. For full information please visit: www.staffordshire.gov.uk/Education/Educational-awardsbenefits/FreeSchoolMeals/Overview

ARBOR PAY

Our preferred method of payment for school trips and meals is online payment via Arbor Pay. You will have access to Arbor Pay once you have signed up to the Arbor App. If you have any queries or do not have access to the internet for your bank accounts, please contact the finance department to arrange an alternative method of payment.

When you top up money on Arbor Pay, this will credit your child's balance to use in the dining hall. There is a minimum top up amount of £2 that can be made via Arbor Pay.

To help students manage their spending, a daily 'spend limit' of £6 is programmed into the system. If you would like your child's daily limit amending, please request this via enquiries@hartschool.org.uk or by calling 01889 802440. Please check this account regularly and make sure there is always enough on the account to cover your child's lunch.

The easiest way for student to use the tills is to have their unique pin code. This will be issue to your child on the first day of school.





UNIFORM AND

At The Hart School we firmly believe that the wearing of a smart school uniform encourages pride and loyalty to the school and demonstrates that the student is a willing member of our community.

Parents and carers are asked to ensure that their child is dressed correctly for school. We particularly welcome your support on uniform and equipment.

Uniform Suppliers

Uniform is available to purchase from these Rugeley high street shops:-

Uniforms Plus: Anson St, Rugeley Town, Rugeley, WS15 2BB Tel: 01889 575515

Blueprint Designs: 2 Brewery St, Rugeley, WS15 2DY. Tel: 01889 800644



APPEARANCE

Our school uniform requirements are as follows:-

- School blazer with logo
- School tie
- School jumper (optional) to be worn under blazer – not as an alternative
- Plain white shirt (short or long sleeve) with collar and buttons to top – polo shirts are not acceptable
- Straight leg, full length plain black trousers – tight fitting and/or denim effect material is not acceptable
- Plain black leather or leather-look school shoes. Shoes with rubber toe; pumps; training shoes; canvas or logo styles are not acceptable
- Black socks or black opaque tights
- The Hart School logo skirt (**only**) or tailored black trousers

Please note tight fitting leggings/jeggings and/or denim effect material are not acceptable. Hoodies are not permitted.

Jewellery

The school does not allow nose studs; eyebrow; tongue or other piercings and these must be removed.

Only the following items are allowed:-

- One pair of small stud earrings or sleepers, with an earring in each ear
- One watch
- One plain ring

Bracelets, necklaces, and all other items of jewellery are not permitted. The school also accepts no responsibility for any jewellery brought onto the premises.

Make-up

Students are allowed to wear discreet make-up. However, school reserves the right to ask for excessive amounts to be removed. Nail varnish should be natural and not bright coloured; false nails are not permitted.

False eyelashes and fake tanning lotion are not permitted. Students will be asked to remove excessive makeup before attending school.

Hair styles

We do not allow extreme or unnatural hair styles or colours – or partially or fully shaved heads. We reserve the right to define extreme hairstyles and remove from classes any student who comes into school with such a hair style. If any style constitutes a health and safety risk, we will request that this is rectified.

PE & PERFORMING ARTS

All students must bring their PE/PA kit to every lesson, even if they are going to be excused for medical reasons, as they may be asked to fulfil a different role depending on the activity,

i.e line judge; umpire; coach, etc. Students should be suitably dressed in PE kit and bear in mind the weather conditions.



KIT

REQUIREMENTS

All Students

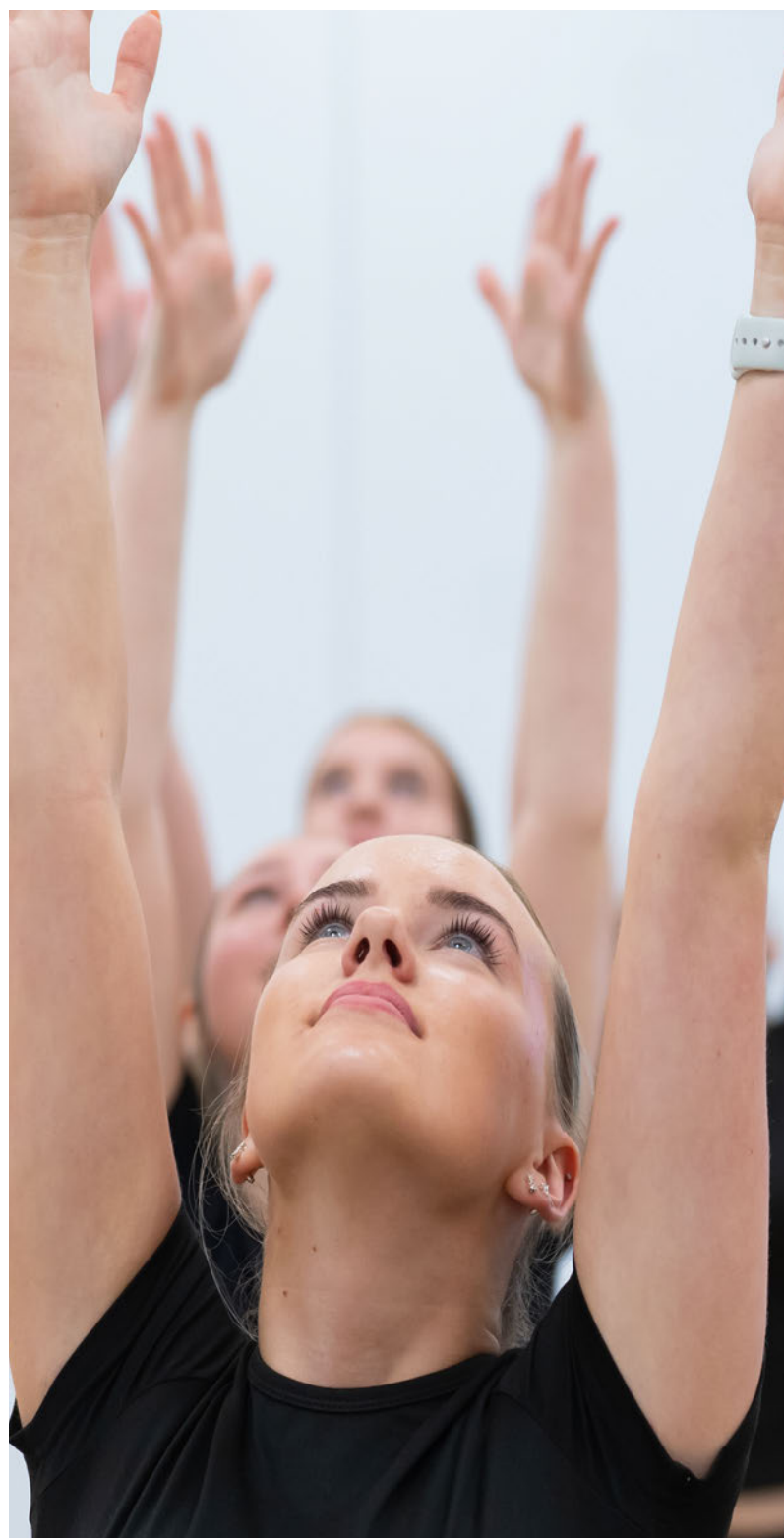
- Black shorts or skort – with school logo
- Black socks
- Black PE shirt – with school logo
- Training shoes – with non-marking sole if used in gym
- Football boots and shin pads
- Plain black tracksuit bottoms or leggings – for cold weather (optional)
- Gum shield

Additional items of PE wear are available from our school uniform stockists – these are optional.

Essential: Please ensure that all items of school uniform and PE kit are clearly marked with the student's name so they can be returned easily if lost.

In cases of severe hardship, parents and carers should approach the school which may be able to assist in the provision of uniform.

Items of non-uniform will be confiscated and retained by the school until an agreed time of collection; the school will not take responsibility for the loss of confiscated items.



HOME & SCHOOL PARTNERSHIP

The Hart School functions around the vision that each and every one of our students is going to be motivated to achieve their individual potential. However, our aim can only be achieved by parents, teachers and students working together in partnership.

We aim to ensure that staff, students and parents are working together in their journey towards academic and personal success.

Behaviour

The ultimate success of each teacher in teaching and in each student in learning, rests upon the general behaviour of the students when they are in the classroom. We have high, yet reasonable, standards of behaviour. It is expected that the school's Code of Conduct be adhered to in addition to the separately published Classroom Standards and Rules. These documents request basic good manners and the adoption of appropriate language.

You can support the school by upholding similar expectations at home and by supporting the staff if they reprimand your child. Rudeness to a member of staff, no matter what the circumstances, will not be tolerated; neither will disruption during lesson times or disrespect towards fellow students. Ultimately your child's behaviour is your responsibility – please ensure that your child has firm guidance and boundaries with regard to what is appropriate behaviour.

You can find the Hart School Behaviour for Learning policy and Compliance Strategy on the school website within the policies section.

You can monitor your child's behaviour on Arbor using the parent login.

REWARDS & PRAISE

Students will be recognised for their achievements by receiving one positive point every time they meet the classroom standards in a lesson. If students achieve an achievement point every lesson of the academic year they will be able to achieve 900 positive points. Alongside the manners and attendance scheme, students will have the opportunity to exceed 1500 positive points. Every time a student hits a certain threshold there will be a reward attached. The threshold is as follows:

- Gold Learner = 500 Arbor points
- Silver Learner = 300 Arbor points
- Bronze Learner = 200 Arbor points

Staff will continue to recognise students' achievements each week and they should continue to reinforce their positive praise through:

- Postcards (Log on Arbor via Postcard button – 5 positive points)
- Positive phone calls home (Log on Arbor via positive phone call button – 2 positive points)

Students will be recognised for their positive contributions at the end of each half term along with a certificate distributed in an assembly.

The top community contributing students will receive rewards at the end of each half term, a certificate distributed in assembly and lunch with the Principal.

Equipment

Students must bring their own equipment to school each day to ensure they can participate fully in lessons. They will need a pencil case with the following equipment :

- Pen (black, green and purple)
- Pencil
- Ruler
- Protractor
- Eraser
- Scientific calculator (Casio FX-83 are recommended)
- Spanish dictionary for your language lessons



Additional school equipment (which is really useful) includes a geometry set and an English dictionary.

Failure to bring the correct equipment to school often disrupts the lesson. Please, support your child by purchasing all the items on the list and checking that your child always brings them to school. Please note that graffiti is not permitted on exercise books or pencil cases.

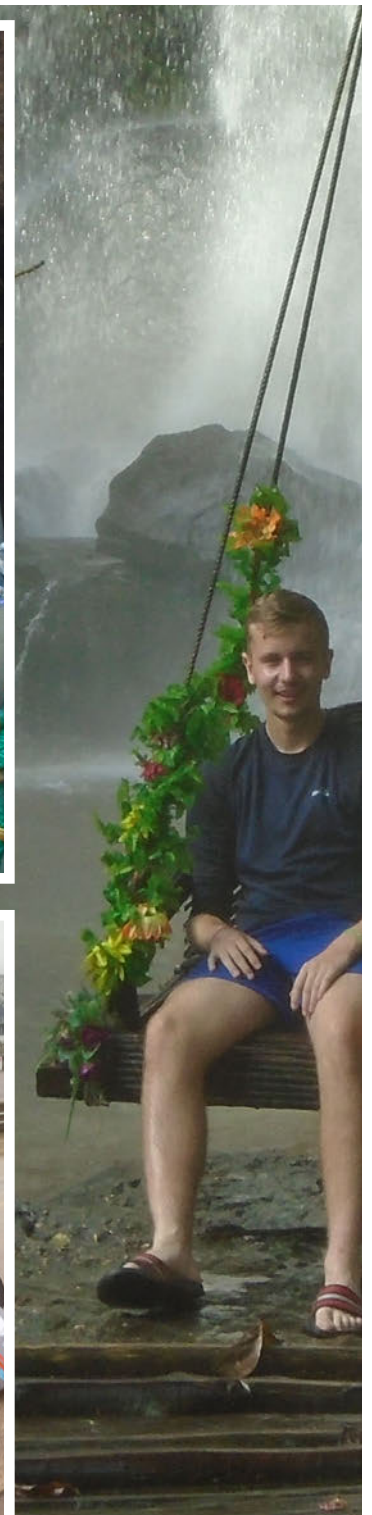
Inspiring Enthusiasm, Releasing Talent, Developing Leaders

We boast a rich and diverse extra-curricular enrichment programme, which aims to further develop the skills, passions and abilities of our students. Throughout their journey here, students will be offered the opportunity to broaden their horizons by visiting different parts of the world on field trips, study tours and trips. In addition, our Skills for Life programme further supports students' social and moral development as well as their employability and empathetic skills.

The extensive range of opportunities offered includes The Duke of Edinburgh's Award; Scholars Programme; Performing Arts Club; Green Power Car F24 Challenge; STEAM; trips and residential excursions linked to specific areas of the curriculum; charitable and fund-raising activities; mentoring younger students; public speaking contest; photography competitions and school bands.

We also participate in community projects through World Challenge Expeditions, which has seen our students travelling to Cambodia and Ecuador along with skiing excursions in Italy.

We firmly believe that giving students these opportunities to experience and immerse themselves in different cultures enables them to develop as more rounded individuals.





HOW YOU CAN HELP

We hope that you will maintain your involvement in your child's education as they transfer to The Hart School. Educational research demonstrates that parental involvement in a child's education positively affects students, parents, the school and the community.

You are your child's most important teacher and play a critical role in their education as you are a significant influence on their life. Students learn even more when school and parents work together as a team. The suggested ways to help support your child's learning are intended to get you started (You may already be following many of these suggestions)

- Get involved – we want to encourage you to be an active member of our school community
- Attend Parent Evenings and events. When students see that parents believe school is important they feel supported
- Volunteer – The PTFA is a great way to take part – please support them in anyway you can.

Support school in its efforts to maintain discipline.

- Ensure your child is wearing their uniform correctly
- Inform the tutor if your child has any issues outside school that may affect his or her school work
- Read the school newsletter and discuss its contents with your child
- Share with us any questions or concerns you may have.

As parents you can help to teach your child these skills.

Partners In Education

Parents and teachers want the same thing for children – the best possible education. We make a strong team when we all work together. These are some ideas to help us and your child:

- Ensure your child attends school regularly
- Monitor your child's work weekly
- Ensure homework is completed on time
- Encourage personal study (not just doing homework)
- Encourage personal reading – preferably daily
- Ensure your child has the correct equipment (pen, pencil, etc)
- Encourage your child to be organised
- Encourage your child to write well and provide a place to write
- Talk to your child about what they are learning in school and respond to their ideas
- Support school in its efforts to maintain discipline.

Help Your Child Achieve More

Research clearly shows that behaviour and attitude affect classroom success. Successful students:

- Pay attention
- Are interested in their work
- Learn and remember
- Study and know how to get help when necessary.

FAQS

How to help your child prepare for life at The Hart School.

How will my child know where to go on the first day?

Plenty of staff will be on hand to meet your child at the front gate and direct them to the appropriate place. Student Ambassadors will also be there to escort students.

Will they need PE kit on the first day?

No, the first PE lesson will not involve changing into kit.

Who can my child go to if they need help?

The Form Tutor will be the first point of contact your child will see every day if they have any concerns. They will also have a team of Pastoral staff who will be there to support them. The Head of Year and Student Support Officer will also be based in the zone daily.

How will my child find their way around school?

Lots of staff will be out and about at lesson changeover to ensure that students know where to go. They will also be provided with a map of the buildings. All staff wear a hi-vis jacket during lesson changeover.

What if my child forgets something?

Teachers will be understanding in the early weeks of the term. If they need something important, Reception can contact home for it to be sent in.

What do they do about getting lunch?

Students can get food from one of the 4 serving locations or bring packed lunch. They will pay by using their thumb print linked to their account which you will need to top up in advance.

What if my child is ill before school / during the school day?

If your child is ill before school, you may decide to send them. You can ring in to alert the Year Office. If they become ill during the school day, they should go to first aid. They will then be assessed and you will be contacted if it is necessary.

What equipment will they need?

A full uniform and equipment list is printed in the new Year 7 section on the website. They should have a pencil case with pens, (including a green pen), pencil, sharpener, rubber, ruler and scientific calculator. A glue stick is often a useful addition.

Where can my child find out about extra-curricular clubs?

Each term a Beyond the Classroom booklet will be shared with both students and parents/carers. Information will also be circulated during tutor sessions as well as assemblies.

What time does my child need to be at school?

All students need to be on site by 8.30am each day.

“Providing excellent education and developing lifelong learners at the heart of the community.”

Follow us:

<https://www.facebook.com/thehartschool>

<https://twitter.com/thehartschool>

