



Design Year 9 CET Assessment Revision



This document contains the key information that you will need for your Creative Education Trust Assessment.

Some strategies to help maximise how you use this pack:

- Copy out information to help you learn.
- Test yourself on information (Look-Cover-Test-Check).
- Read through the pack silently to deepen your understanding.

Some additional tasks that could help you:

- Listen to a wide range of music from various genres.
- Do things that take you out of your comfort zone. (Answer questions in class, offer to read out, take part in PA club).
- <https://www.bbc.co.uk/bitesize/guides/zhdpvj6/revision/1> have a look at this revision link
- <https://www.bbc.co.uk/bitesize/guides/zjgyb82/revision/2>

The Hart School nor The Creative Education Trust take responsibility for content of external weblinks. Use them at your discretion.



Packaging



You must know the four main functions of packaging (What is it used for?)

TO PRESERVE



- Foods are packaged to prevent them from going rotten.
- It also keeps them hygienic and allows them to be bought conveniently.

TO PROTECT



- The packaging protects the contents, allowing the contents to arrive at the shop or at home undamaged.

TO INFORM



- Labels provide information about the product to the customer or shop.
- They can be used as a marketing tool.
- They can make claims to a customer.
- They can carry information for shops in barcodes.

TO TRANSPORT



- Items are packed into boxes or trays called 'Outers' so that they can be moved, and stacked easily.
- Packaging usually tessellates to allow more to be transported in a smaller lorry, reducing costs.





Paper, Card & Board



MATERIALS: Paper & Boards

Paper & board is made from wood pulp (trees) and waste paper (recycling). This pulp is grey/brown in colour.

The pulp must be bleached to make it white (just like when you bleach your hair!)

Bleaching makes the paper/card more expensive to make, but if you are printing onto the paper/board, it must be white to avoid discolouration and poor printing quality

Paper

Paper is mainly used for paper bags and labels

Its **WEIGHT** is measured in **GSM** (Grams per Square Metre)



DUPLEX BOARD



This is a unbleached (non whitened) wood pulp board, with a bleached (white) liner.

The bleached liner gives a good surface to print onto, without the high cost of the whole board being bleached.

Great for high speed printing and automatically packed boxes.

Applications: Food and pharmaceutical packaging. Swing tag labels (for your activity pack).

SOLID WHITE BOARD



board is totally bleached (whitened).

It is expensive because of the additional cost of bleaching the wood pulp.

It is very strong, and give an excellent surface to print onto.

Applications: Packaging, Perfume Boxes

FOIL LINED BOARD



This is one of the previous boards, with a laminated foil surface.

This helps to make the foil waterproof, and retain the heat of a meal contained inside it.

Applications: Tetra Paks, drinks cartons, ready meal lids

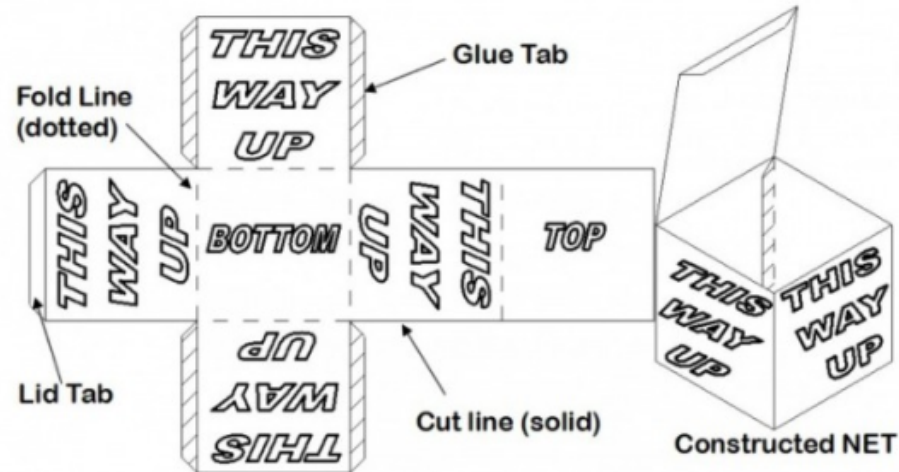


Packaging



PACKAGING NETS

- A NET is a two-dimensional (2-D) shape, which when scored, folded and glued together, makes a three-dimensional (3-D) package, box or carton.
- It must be made ACURATELY so that all sides fit together perfectly.
- The design must be printed the correct way up so that when the box is constructed, everything is the right way up.
- A standard set of line types are used to draw NETS.



Parts of a Packaging

Name the following parts of packaging. What is the function of each?





Plastics Packaging



PVC

Poly Vinyl Chloride

Blister Packaging
& Inner Trays



Juice &
Shampoo
Bottles

HDPE

High Density Polythene



Detergent
bottles



Milk
Cartons



Bottle lids

LDPE

Low Density Polythene



Carrier Bags



Squeeze
Bottles

PS

Polystyrene

Expanded PS: Egg &
takeaway cartons,
protective packaging



Yoghurt Pots & Food Trays



PP

Polypropylene



Sauce
squeezey



Packaging: activity
pack cases



Biscuit & crisp
packets

PET

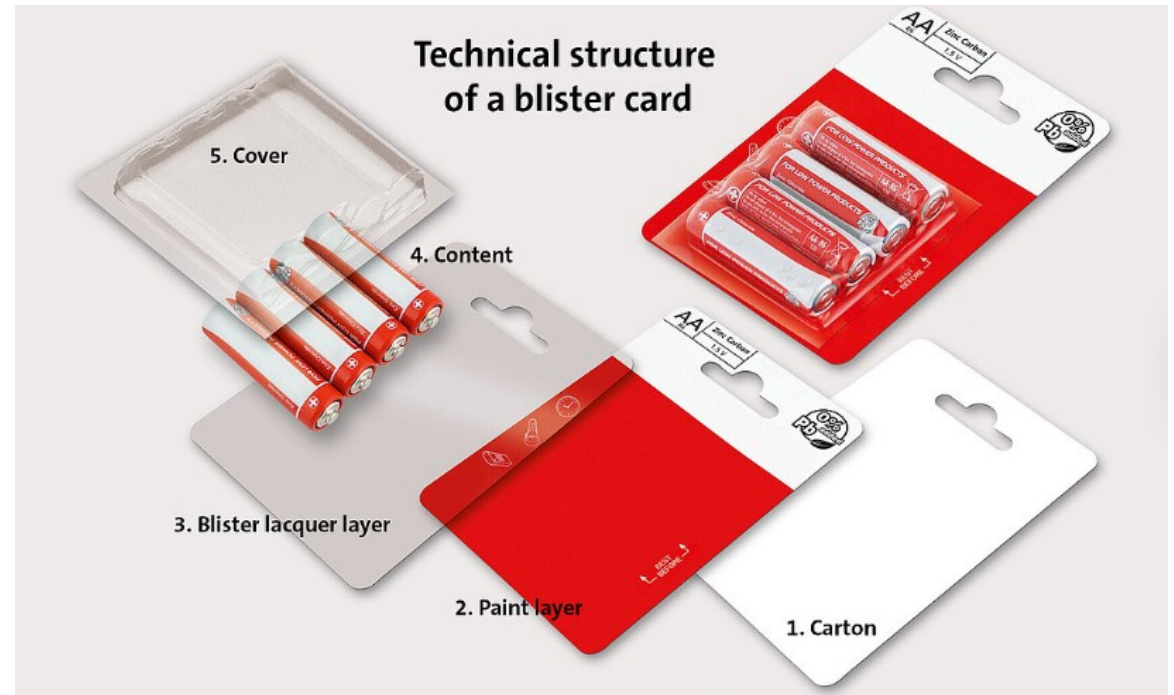
Polyester
(Polyethylene Terephthalate)

Oven ready meal
roasting bags



Fizzy
drink
bottles

Technical structure of a blister card



<https://www.youtube.com/watch?app=desktop&v=Oj9nQiM2vqA>

<https://www.youtube.com/watch?v=1unuc9qj2-A>



(Topic)

Keywords / Definitions



Acrylic	Technology concerned with the design, building, and use of engines, machines, and structures.
Bitmap	<u>Techsoft</u> 2D Design has many f_____.
CAD	Products of the graphic arts, especially commercial design or illustration.
CAM	Light amplification by stimulated emission of radiation acronym.
Card	Give an authoritative instruction to do something.
Clipart	Manufactured board often used in school laser cutters.
Conversion	The company that makes the 2D Design program.
Drawing	Writing, words.
Engineering	The two main types of images are v_____ and bitmap.
Features	Common plastic used in laser cutters.
Graphics	The two main types of images are vector and b_____.
Laser cut	Computer Aided Design
Page Size	Computer Aided Manufacture
Plywood	Laser cutters can cut paper, c_____, plastic, wood etc.
<u>Techsoft</u>	Simple pictures and symbols made available for computer users.
Text	Changing or causing something to change from one form to another.
Vector	A picture or diagram usually created by hand.