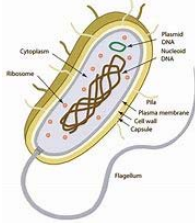


B1 Knowledge Organiser – 4.1.1/4.1.2 - Cell Biology



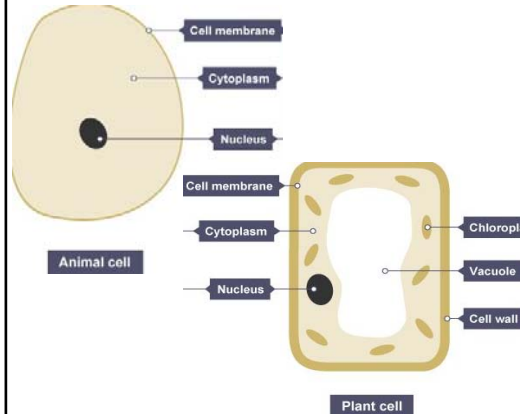
1 Prokaryotic cells

- Bacterial cells
- Have cytoplasm, cell membrane and cell wall
- Do not have a nucleus
- DNA found as a loop - plasmid



1

2 Eukaryotic cells

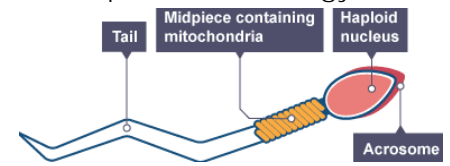


- **Nucleus:** contains genetic information. Controls the activities of the cell.
- **Cell membrane:** Controls what goes in/out of the cell.
- **Cytoplasm:** where chemical reactions happen.
- **Chloroplasts:** absorbs light energy so the plant can make food.
- **Permanent Vacuole:** contains liquid to keep the cell rigid.
- **Cell wall:** strengthens the cell.
- **Mitochondria** – Releases energy from respiration
- **Ribosome** – Makes protein

2

3 Cell specialisation

- Specialised cells have a particular function
- Identify the **adaptation** and **explain** how it allows the cell to perform its function
- **Sperm cell:** Tail – swim to egg, Lots of mitochondria – requires lots of energy

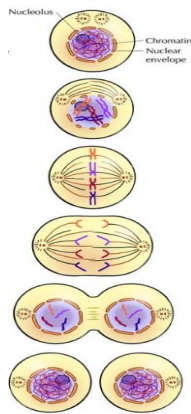


3

4 Cell division – Mitosis – (Growth and repair)

Chromosomes are made of DNA and carry a large number of genes. Found in pairs. **23 pairs** in each human cell. **The cell cycle:**

1. Cell **grows** to increase the number of sub-cellular structures, e.g. mitochondria and ribosomes
2. DNA **replicates**
3. Chromosomes line up on the equator
4. Spindle fibres **pull chromosomes apart** so one copy is at each end of the cell
5. **Nucleus divides**
6. Cytoplasm and cell membrane divides to form **two identical cells**

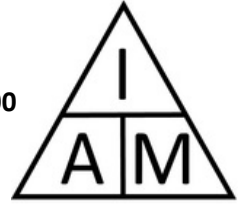


4

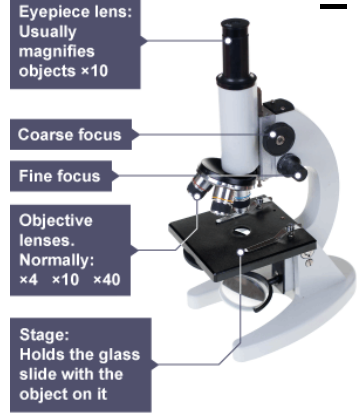
5 Microscopy – Required Practical

Maths skills:
 $1,000 \mu\text{m} = 1\text{mm}$
 $\mu\text{m} \rightarrow \text{mm}$ divide by 1000

- Increasing magnification makes an image bigger
- Does not “zoom in”



Remember:
A = Actual size
I = Image size
M = Magnification



5

6 Stem cells

- Stem cells are **undifferentiated cells** which are capable of **differentiating into many types of cell**
- Stem cells from **human embryos** can be cloned and made to differentiate into different types of human cell
- Stem cells from **adult bone marrow** can form blood cells
- Treatment from stem cells may help **paralysis and diabetes**
- **Meristem tissue** in plants can differentiate into any type of plant cell

6

7 Stem cell applications

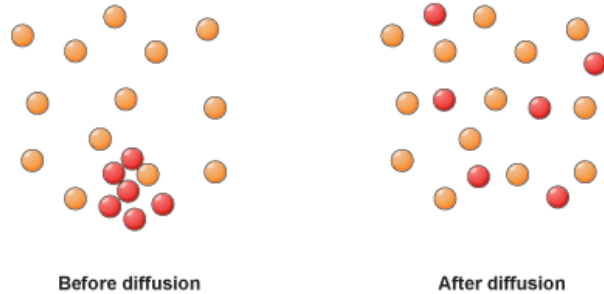
- An embryo is produced with the **same genes as the patient**
- Stem cells from the embryo are **not rejected** by the patient’s body so may be used for medical treatment
- **Risk of viral infection**
- Stem cells from meristems in plants can be used to produce clones of plants quickly and economically
- Rare plants can be **cloned to protect from extinction**
- Crop plants with **resistance to disease** can be produced in large numbers

7

B1 Knowledge Organiser – 4.1.3 – Transport in cells



Diffusion

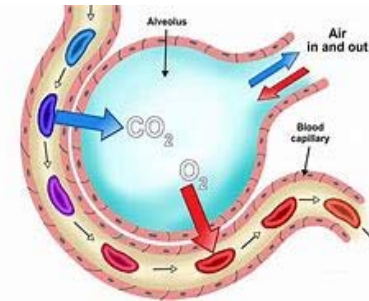


1

- Transport of substances **down a concentration gradient**
- Gases
- Liquids – except water
- **High to Low concentration**
- **Passive process** – No energy required

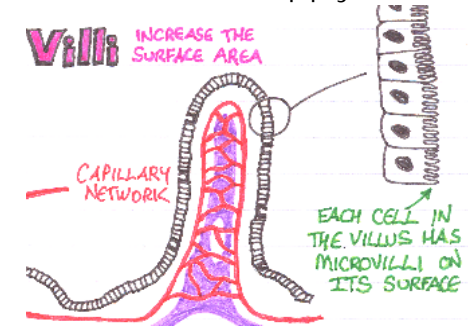
Diffusion - Contexts 2

- Gas exchange
- Digestion
- Respiration



Diffusion - Adaptations 3

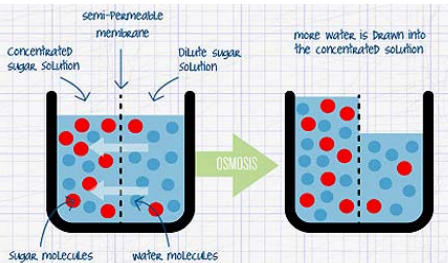
- E.g. alveoli/microvilli
- Large surface area
- Short diffusion pathway
- Good blood supply



Osmosis

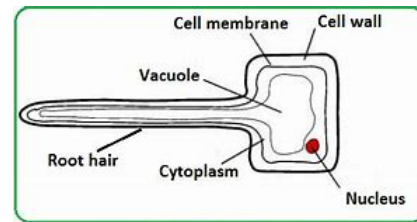
4

- Movement of water molecules from a more dilute to concentrated solution



Osmosis - Adaptations 5

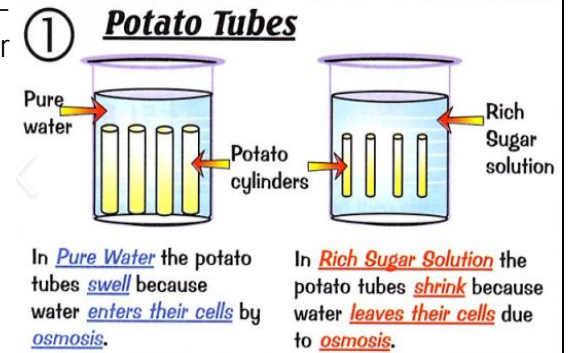
- **Root hair cell:** large surface area, absorbs more water



Osmosis – Required practical

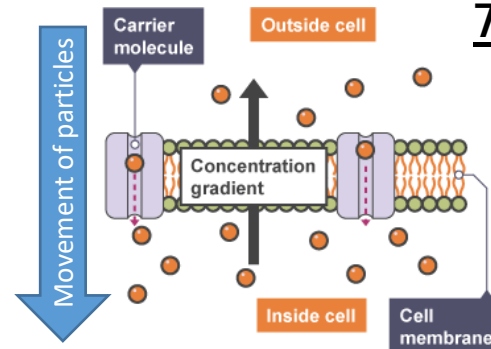
6

- **Independent variable** – Concentration of sugar solution
- **Dependent variable** – Change in mass of potato
- **Control variables** – Volume of sugar solution, time in sugar solution



Active transport

- Transport of substances against a concentration gradient
- **Low to High concentration**
- **Requires energy** released from respiration



7

Contexts

8

