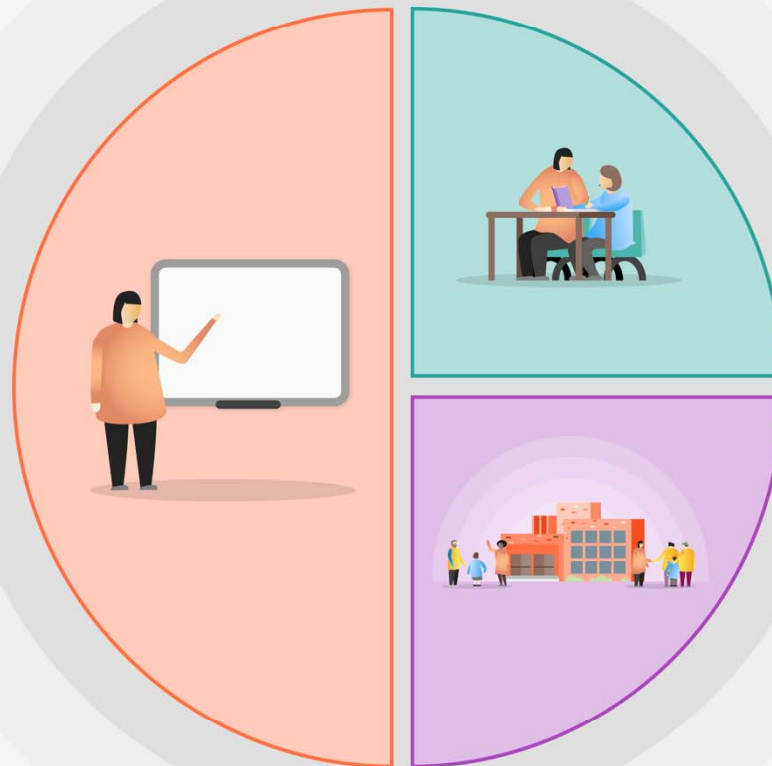


SCHOOL PLANNING (2020-21) – TIERED MODEL

The Hart School

1 Teaching

- Whole school CPL programme.
- Implement CPL approaches to support new learning and retrieval.
- Frequent Low Stakes Testing to ensure all students, and disadvantaged students, experience success and celebrate the acquisition of knowledge.
- Deliberately reduce workload to aid staff wellbeing and enable high quality responsive teaching.
- Life Skills lessons to support student well-being and emotional support in addition to key skills development.
- Regular Director of Faculty meetings focussing Teaching and learning with a solution driven culture.
- Director of Faculty led bespoke subject support plans.
- GCSE strategies for resit KS5 students.
- Increased curriculum time for maths and science A level courses.
- Online tutors for year 12/13 support, specialist catch up
- Purchase of GL Assessments for Y8/9 to provide baseline and gap details.
- Purchase of SpellZone App to support SPAG gaps.



2 Targeted academic support

- Literacy and Numeracy Interventions
- KS4 mathematics and English Specialist small group intervention.
- Deployment of TAs
- Online Virtual Remote Learning Timetables
- Extended virtual Teams catch up programme, Y7,8,9
- Extended virtual 'Teams' intervention programme, Y7,8,9,10,11.
- Pastoral contact home for all disadvantaged students and those identified as vulnerable.
- GL Reading tests for Y7,8,9 followed by lunch time reading clubs for identified students.

3 Wider strategies

- Hart Scholars programme
- Attendance Team Support
- Parent/School support programme
- Ongoing Technical support for virtual learning,
- Ensure most vulnerable students have access to online materials and the virtual timetable
- Incremental coaching programme for teachers focussed on closing the gap.
- Priority School for ASK apprenticeships
- Emotional and well-being support, for year 12/13 students.